

The background image shows a large, multi-story brick industrial building with a series of arched windows and doorways. A prominent sign on the building reads "DAVIS". To the right, a tall brick water tower is visible against a blue sky with scattered white clouds. The entire scene is overlaid with a semi-transparent blue rectangle.

**Appendix B**

# **Short Range Transportation Plan**

# #40 RCUTs

Riverside Dr from Park Ave to Westover Dr

Rank: 8

Cost: \$10,272,000

Benefit Score: 79.3

Performance Measure	Points
Mobility & Accessibility	12.7 / 20
Safety	25 / 30
Economy	31.1 / 35
Community & Nature	6.7 / 10
Operational Efficiency	3.9 / 5

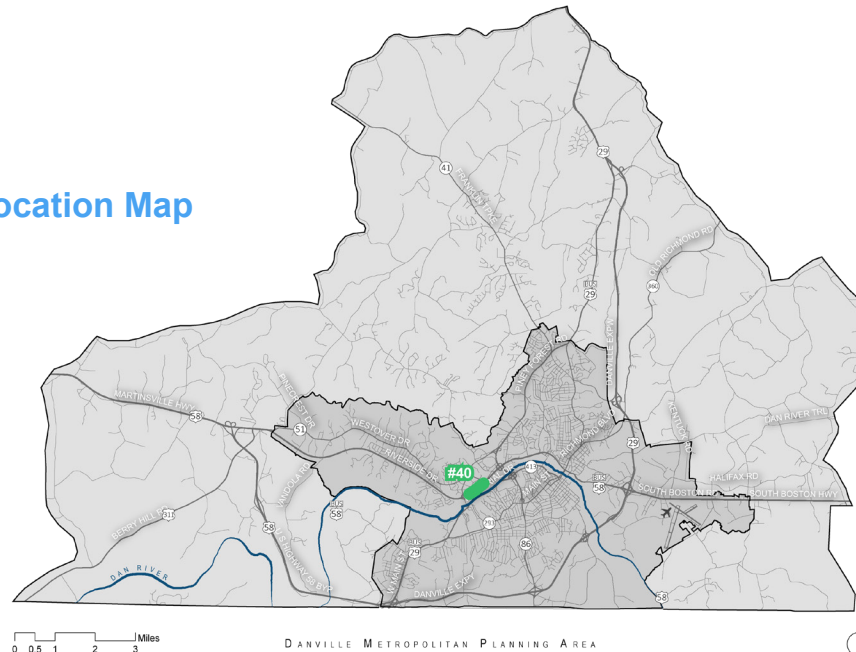
## Project Description

This project includes constructing two RCUTs on Riverside Dr between Park Ave and Westover Dr. Additional improvements include constructing new sidewalks, installing crosswalks and intersection modifications.

## Defined Need

The recommended improvements will improve safety on this highly used corridor.

Location Map



Aerial Image



## Quick Facts

**Functional Class:** Other Principal Arterial

**Source Document:** Riverside Dr (US 58 Business) Corridor Improvement Study

## Potential Funding Sources

- » SMART SCALE - Round V 2023
- » Revenue Sharing
- » Highway Safety Improvement Program
- » Transportation Alternatives

## Next Steps

- » Outreach to property owners



# #1-21 Intersection Improvements

Piney Forest Rd at North Main St

**Rank: 2**

**Cost: \$3,400,000**

**Benefit Score: 67.7**

Performance Measure	Points
Mobility & Accessibility	12.7 / 20
Safety	25 / 30
Economy	15.5 / 35
Community & Nature	10 / 10
Operational Efficiency	4.4 / 5

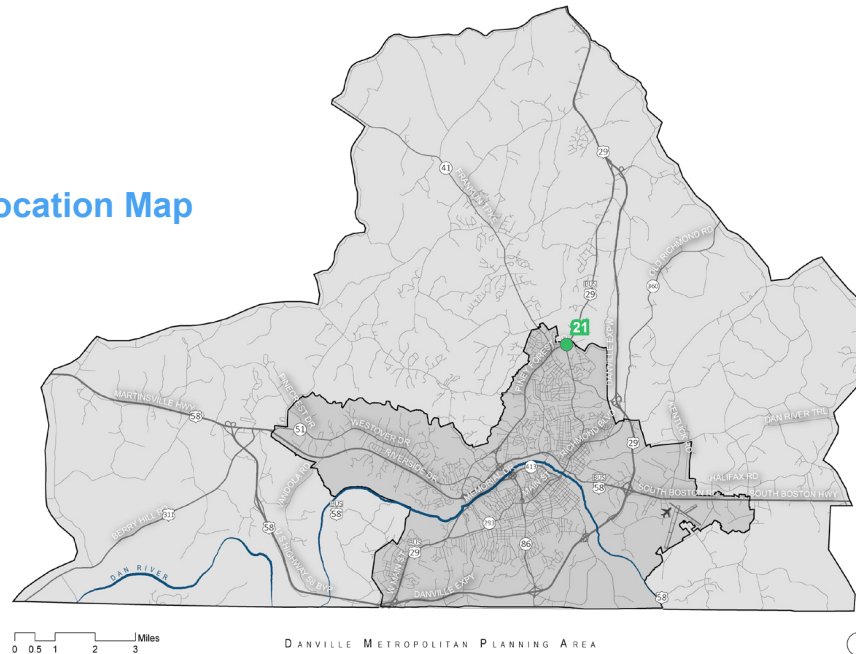
## Project Description

The project entails intersection improvements and alternative design considerations.

## Defined Need

Intersection improvements at this location will improve safety for drivers moving through the intersection.

Location Map



## Quick Facts

**Functional Class:** Other Principal Arterial

**Source Document:** Danville MPO 2015 Long Range Transportation Plan

## Potential Funding Sources

- » SMART SCALE - Round V 2023
- » Revenue Sharing

Aerial Image



## Next Steps

- » Outreach with adjacent properties
- » Conduct traffic study
- » Use VJuST to evaluate alternative intersections
- » Determine intersection type
- » Prepare Engineering-level designs

# #19 Safety and Access Management

South Boston Rd from Danville Expressway to the Eastern City line

**Rank: 3**

**Cost: \$8,500,000**

**Benefit Score: 71.3**

Performance Measure	Points
Mobility & Accessibility	11.3 / 20
Safety	20 / 30
Economy	27 / 35
Community & Nature	8.3 / 10
Operational Efficiency	4.4 / 5

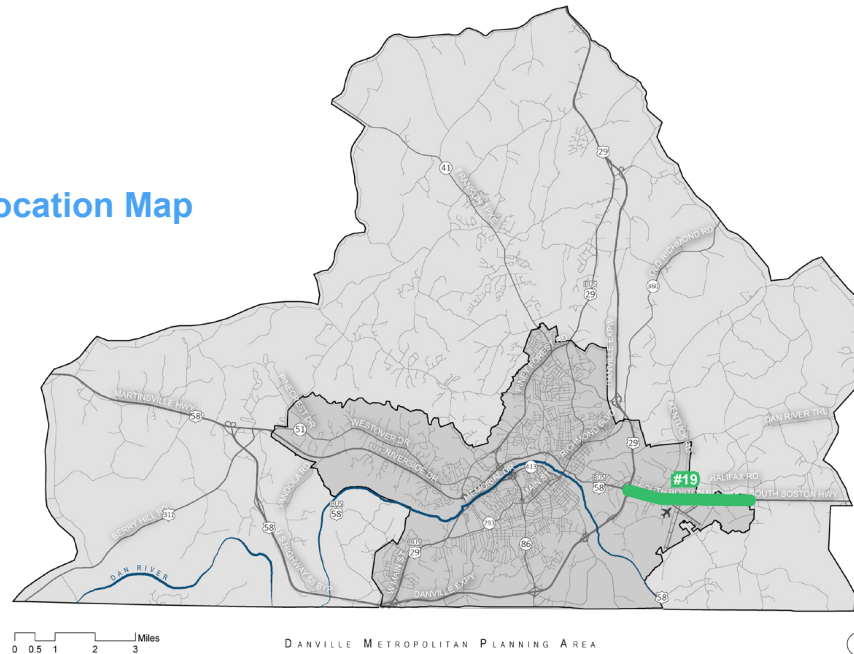
## Project Description

This project entails safety and access management improvements along a key corridor in the region.

## Defined Need

There are two PSI locations present on the corridor, making safety improvements an important project for the region.

Location Map



## Quick Facts

**Functional Class:** Other Principal Arterial

**Source Document:** Danville MPO 2015 Long Range Transportation Plan

## Potential Funding Sources

- » SMART SCALE - Round V 2023
- » Revenue Sharing
- » Highway Safety Improvement Program

## Next Steps

- » Outreach with property owners
- » Develop concepts with specific locations of driveway consolidation and median closures

Aerial Image



# #44 RCUT & Other Improvements

Riverside Dr from Audubon Dr to Arnett Blvd

**Rank: 4**

**Cost: \$5,041,000**

**Benefit Score: 66.0**

Performance Measure	Points
Mobility & Accessibility	12.7 / 20
Safety	15 / 30
Economy	27.2 / 35
Community & Nature	6.7 / 10
Operational Efficiency	4.4 / 5

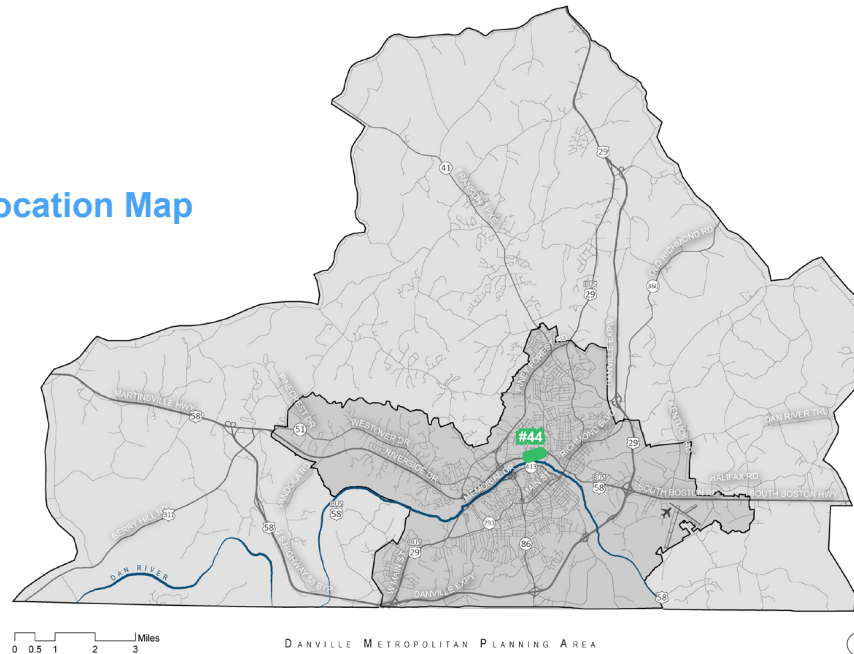
## Project Description

This project involves constructing new sidewalks along both sides of Riverside Dr., installing crosswalks and pedestrian countdown signals at intersections, modifying median openings, and installing a restricted crossing u-turn (RCUT).

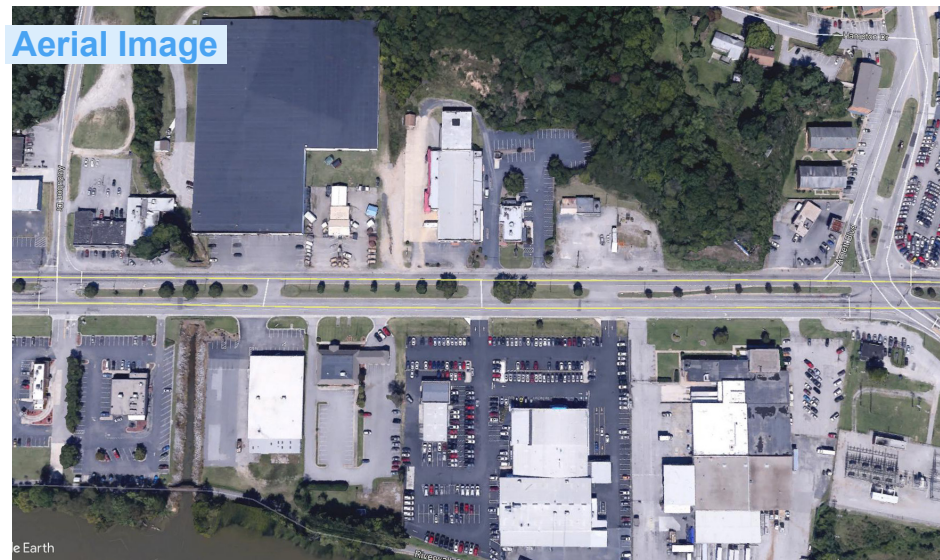
### Defined Need

The recommended improvements will improve pedestrian and motorist safety on this highly used corridor.

Location Map



Aerial Image



## Quick Facts

**Functional Class:** Other Principal Arterial

**Source Document:** Riverside Dr (US 58 Business) Corridor Improvement Study

## Potential Funding Sources

- » SMART SCALE - Round V 2023
- » Revenue Sharing
- » Highway Safety Improvement Program
- » Transportation Alternatives

## Next Steps

- » Outreach with property owners
- » Develop specific locations of driveway consolidation
- » Prepare Engineering-level designs
- » Leverage FEMA opportunity to address flooding at Audubon intersection



# #I-15 Intersection Improvements

Piney Forest Rd & Central Blvd at Parker Rd

**Rank: 5**

**Cost: \$12,400,000**

**Benefit Score: 72.0**

Performance Measure	Points
Mobility & Accessibility	13.7 / 20
Safety	25 / 30
Economy	19.4 / 35
Community & Nature	10 / 10
Operational Efficiency	3.9 / 5

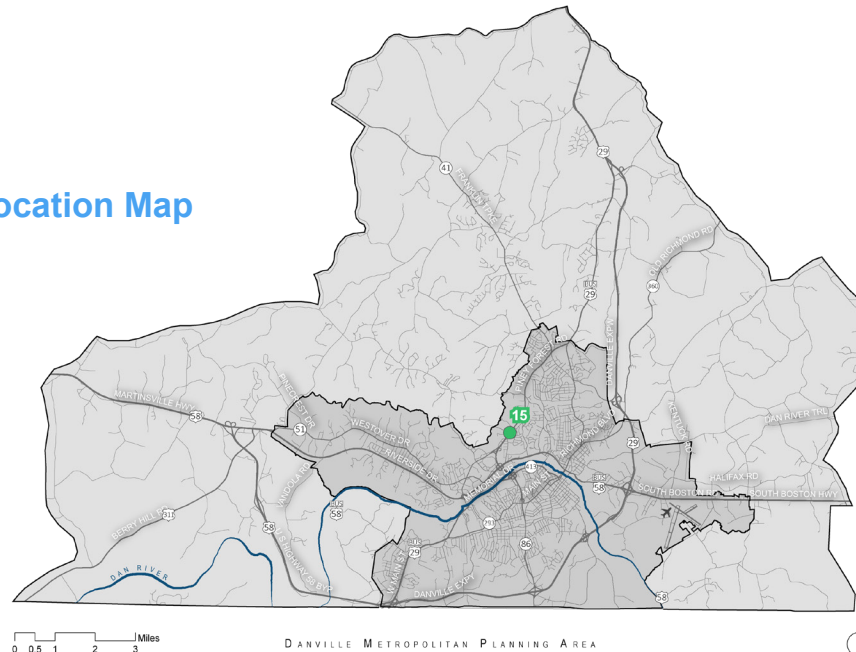
## Project Description

This project includes intersection and circulation improvements at a high-volume intersection.

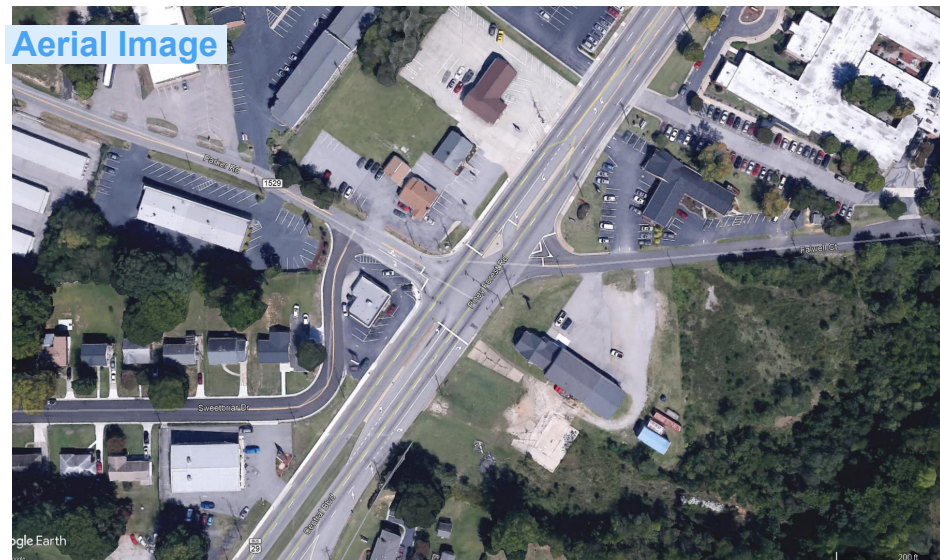
## Defined Need

The improvements will improve safety and vehicle throughput at an intersection with a PSI location and high vehicle volumes.

## Location Map



## Aerial Image



## Quick Facts

**Functional Class:** Other Principal Arterial

**Source Document:** Danville MPO 2015 Long Range Transportation Plan

## Potential Funding Sources

- » SMART SCALE - Round V 2023
- » Highway Safety Improvement Program
- » Revenue Sharing

## Next Steps

- » Outreach with adjacent properties
- » Conduct traffic study
- » Use VJuST to evaluate alternative intersections
- » Determine intersection type
- » Prepare Engineering-level designs

# #1-3 Roundabout

Kentuck Rd at Halifax Rd

**Rank: 6**

**Cost: \$3,500,000**

**Benefit Score: 71.9**

Performance Measure	Points
Mobility & Accessibility	11.3 / 20
Safety	20 / 30
Economy	27 / 35
Community & Nature	10 / 10
Operational Efficiency	3.3 / 5

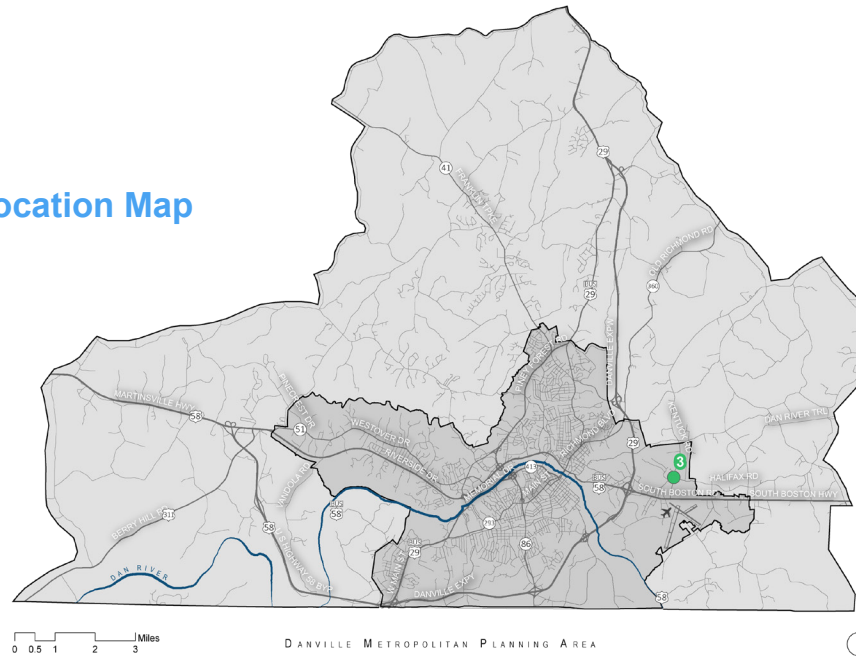
## Project Description

This project involves constructing a single-lane roundabout with widened approaches of each leg.

## Defined Need

The roundabout would improve the intersection Level of Service to LOS A for all approaches, and will reduce the frequency and severity of crashes.

## Location Map



## Quick Facts

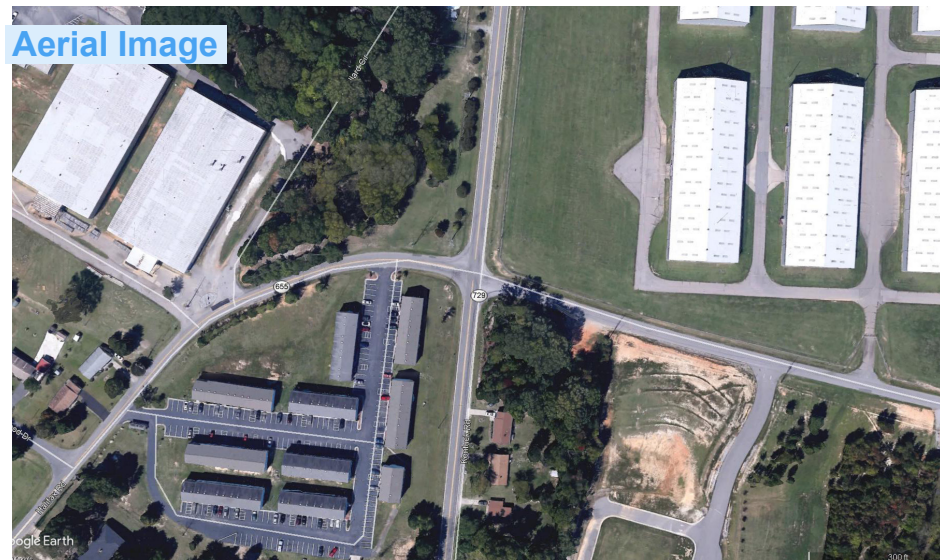
**Functional Class:** Major Collector

**Source Document:** Kentuck Road Planning Level Study

## Potential Funding Sources

» SMART SCALE - Round IV 2021

## Aerial Image



## Next Steps

» Prepare SMART SCALE application materials

# #41 RCUT

Riverside Dr from Westover Dr to Mount Cross Rd

Rank: 7

Cost: \$15,653,000

Benefit Score: 82.9

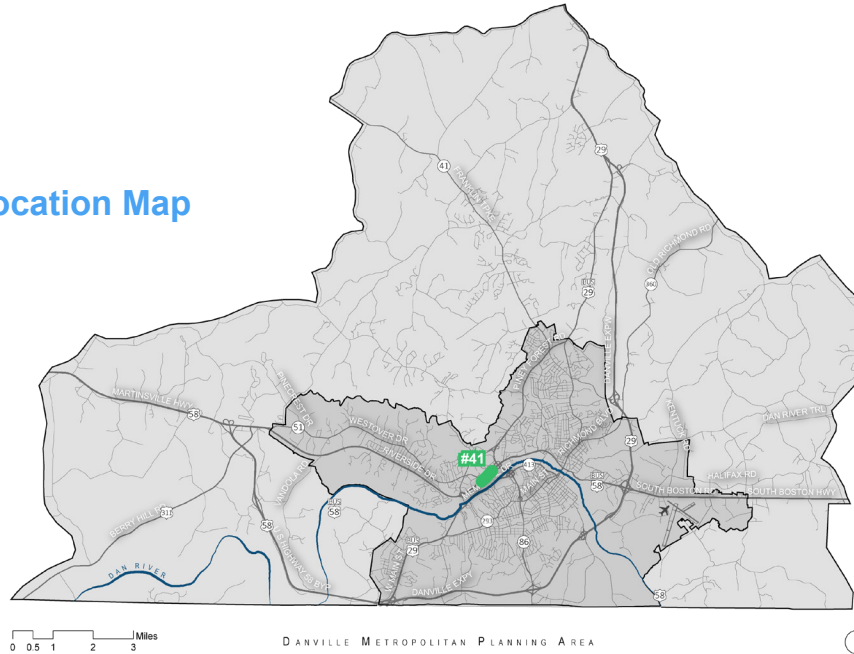
Performance Measure	Points
Mobility & Accessibility	14 / 20
Safety	25 / 30
Economy	31 / 35
Community & Nature	8.3 / 10
Operational Efficiency	4.4 / 5

## Project Description

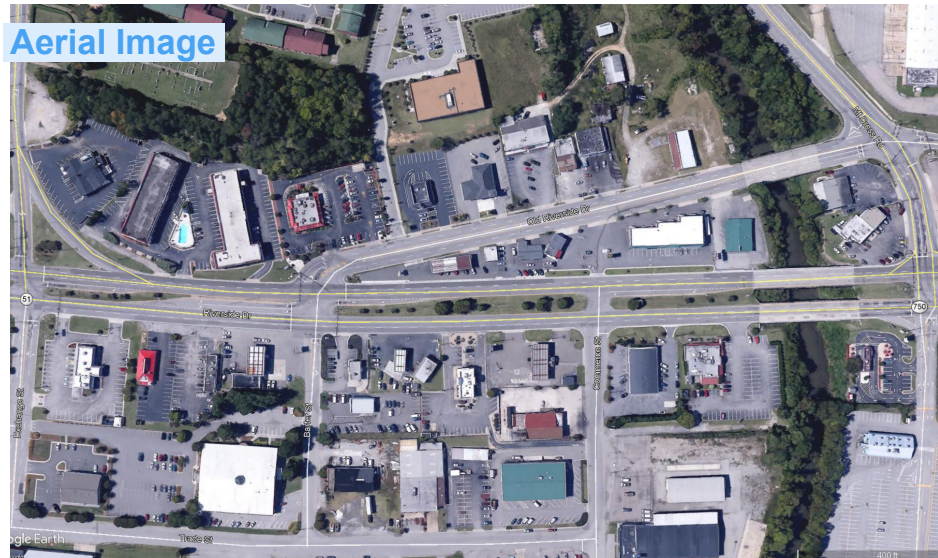
This project involves installing sidewalks on both sides of Riverside Dr., modifying intersections to reduce conflict points and improve pedestrian safety with crosswalks and countdown signals, providing a bus bay and shelter, and converting two existing intersections to a restricted crossing u-turn. **Defined Need**

The recommended improvements will improve pedestrian and motorist safety on this highly used corridor.

Location Map



Aerial Image



## Quick Facts

**Functional Class:** Other Principal Arterial

**Source Document:** Riverside Dr (US 58 Business) Corridor Improvement Study

## Potential Funding Sources

- » SMART SCALE - Round V 2023
- » Revenue Sharing
- » Highway Safety Improvement Program
- » Transportation Alternatives

## Next Steps

- » Outreach to property owners and the community
- » Conduct feasibility of bike and pedestrian connections over Sandy River





# #40 RCUTs

Riverside Dr from Park Ave to Westover Dr

Rank: 8

Cost: \$10,272,000

Benefit Score: 79.3

Performance Measure	Points
Mobility & Accessibility	12.7 / 20
Safety	25 / 30
Economy	31.1 / 35
Community & Nature	6.7 / 10
Operational Efficiency	3.9 / 5

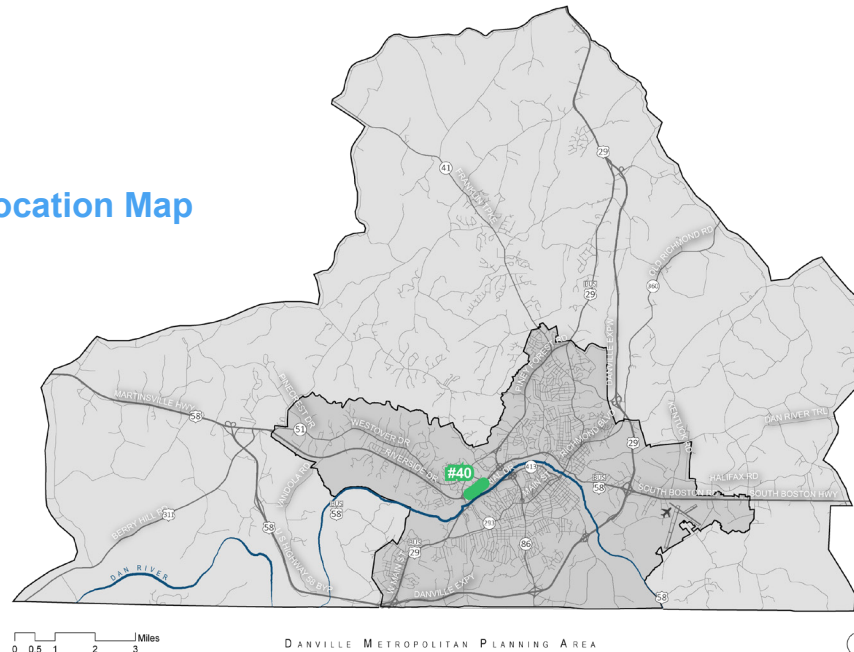
## Project Description

This project includes constructing two RCUTs on Riverside Dr between Park Ave and Westover Dr. Additional improvements include constructing new sidewalks, installing crosswalks and intersection modifications.

## Defined Need

The recommended improvements will improve safety on this highly used corridor.

Location Map



Aerial Image



## Quick Facts

**Functional Class:** Other Principal Arterial

**Source Document:** Riverside Dr (US 58 Business) Corridor Improvement Study

## Potential Funding Sources

- » SMART SCALE - Round V 2023
- » Revenue Sharing
- » Highway Safety Improvement Program
- » Transportation Alternatives

## Next Steps

- » Outreach to property owners



# #13 Turn Lane Modifications

Riverside Dr from Westover Dr to Parkway Dr

**Rank: 9**

**Cost: \$2,400,000**

**Benefit Score: 60.7**

Performance Measure	Points
Mobility & Accessibility	11.3 / 20
Safety	15 / 30
Economy	19.4 / 35
Community & Nature	10 / 10
Operational Efficiency	5 / 5

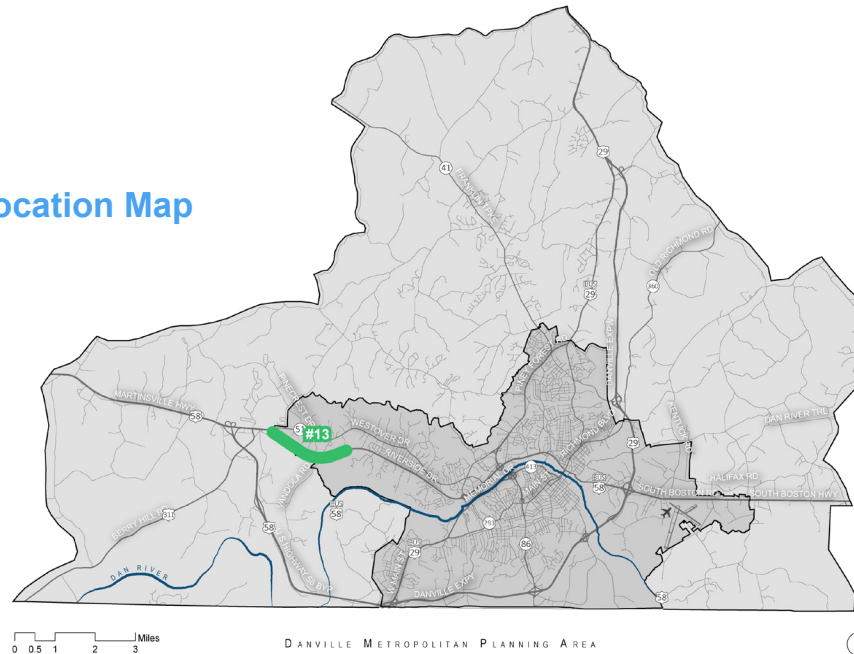
## Project Description

This project entails installing new left turn lanes and extending existing right turn lanes on Riverside Dr.

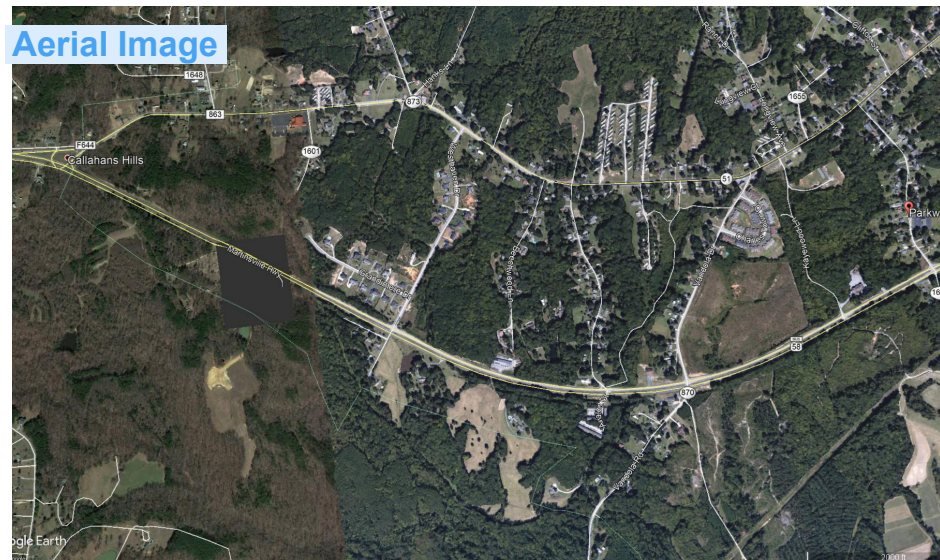
## Defined Need

The new turn lanes will improve safety at existing median openings, while the extensions will bring those turn lanes up to current VDOT standards.

Location Map



Aerial Image



## Quick Facts

**Functional Class:** Other Principal Arterial

**Source Document:** US Route 58 West Access Management Plan

## Potential Funding Sources

- » SMART SCALE - Round V 2023
- » Revenue Sharing
- » Local CIP Funding

## Next Steps

- » Prepare engineering-level design

# #1-1 Intersection Improvements

Moorefield Bridge Rd at Mount Cross Rd

Rank: 10

Cost: \$2,400,000

Benefit Score: 63.5

Performance Measure	Points
Mobility & Accessibility	11.3 / 20
Safety	15 / 30
Economy	23.3 / 35
Community & Nature	10 / 10
Operational Efficiency	3.9 / 5

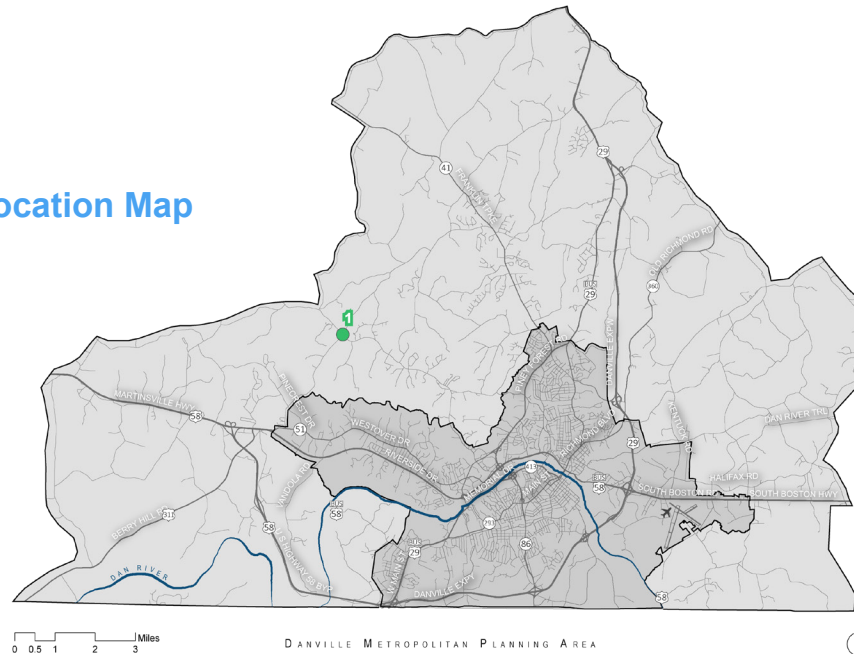
## Project Description

The project involves installing a traffic signal, constructing left turn lanes on the westbound, eastbound and northbound approaches at the intersection. Explore alternative intersection options.

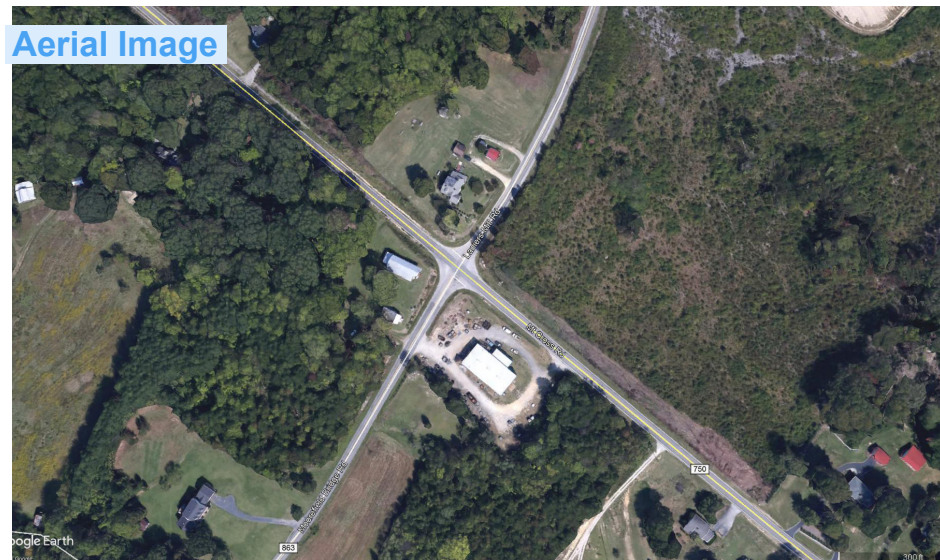
## Defined Need

Intersection improvements at this location will improve the vehicle Level of Service to an acceptable level for the intersection.

Location Map



Aerial Image



## Quick Facts

**Functional Class:** Major Collector

**Source Document:** Moorefield Bridge Rd- Planning Level Study

## Potential Funding Sources

- » SMART SCALE - Round V 2023
- » Revenue Sharing

## Next Steps

- » Outreach to property owners
- » Conduct traffic study
- » Use VJuST to evaluate alternative intersections
- » Determine intersection type
- » Prepare Engineering-level designs